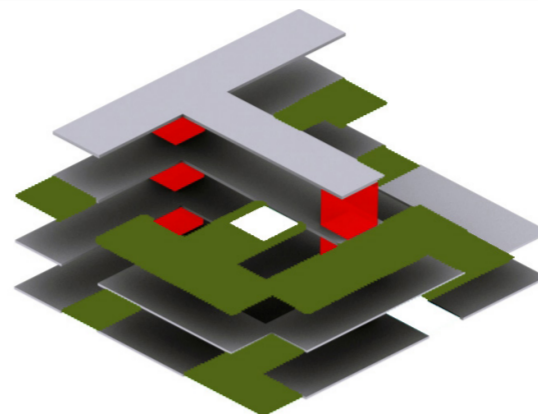
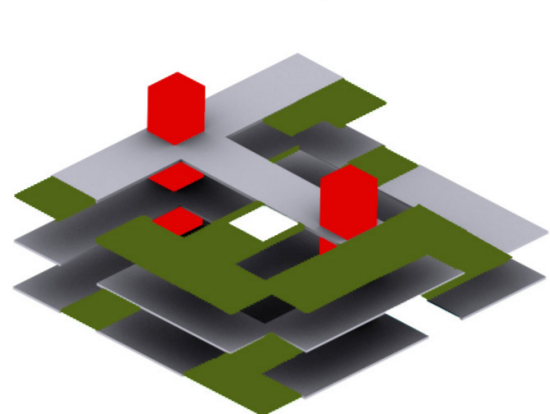
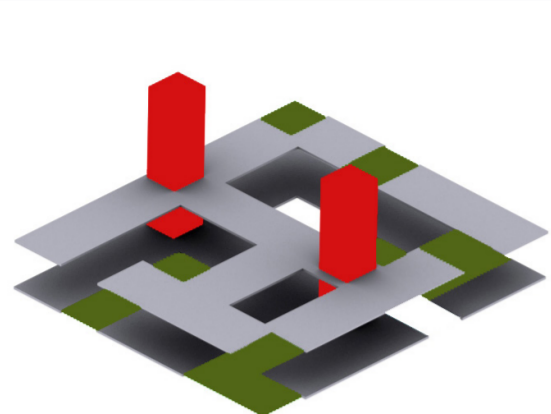
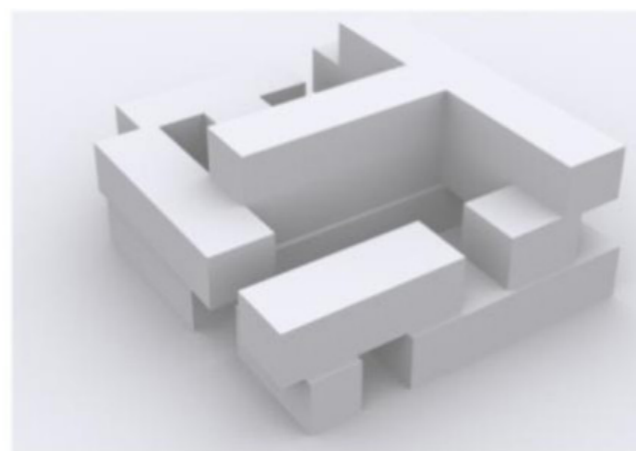
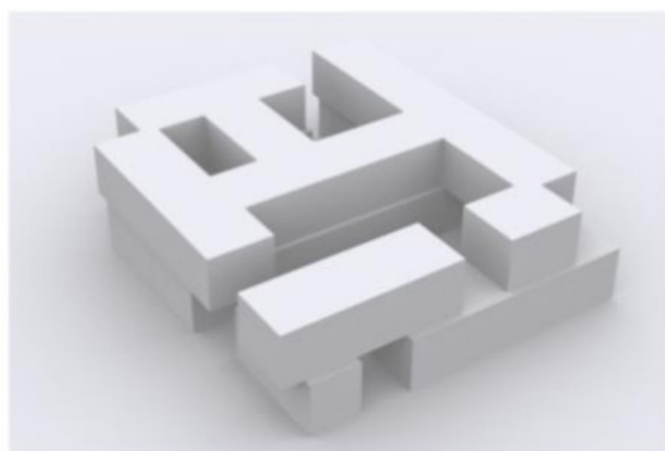
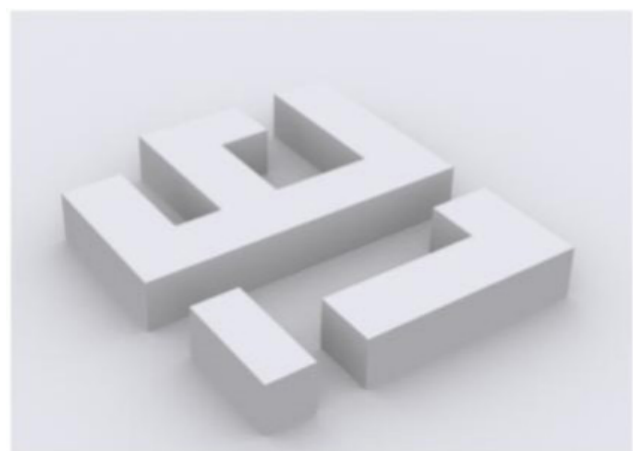


India Glycols Corporate Office | Noida



Ground Floor Plan



First Floor Plan



Second Floor Plan



Set in a tabula rasa landscape in a harsh hot-dry climate, the project was conceived as a **solid perimeter scheme** with a more **fluid interior**, its morphology **blurring the interface between the inside and outside**, much like the Fatehpur Sikri fort complex. A **stacking system** is used to generate a variety of open spaces; courtyards, verandahs, terraces, green roofs, that help to structure spaces. The design's conceptual strength comes from the **spatial organization** which creates **overlaps between the exterior and the interior** and between the various programmatic requirements, creating a **vibrant and creative work environment**.



Surface Temperature

53°C

The spatial organization with stepped courtyards creates overlaps between the exterior and the interior, blurring the interface between them

Evaporative cooling from water bodies, mist gardens and plantation fed through collected and recycled water create an oasis even in the harshest of summers

Green roofs and terrace gardens provide a high level of thermal insulation

8m wide floor plates and daylight from both sides ensures a 100% day-lit, glare free environment

Air Temperature

41°C

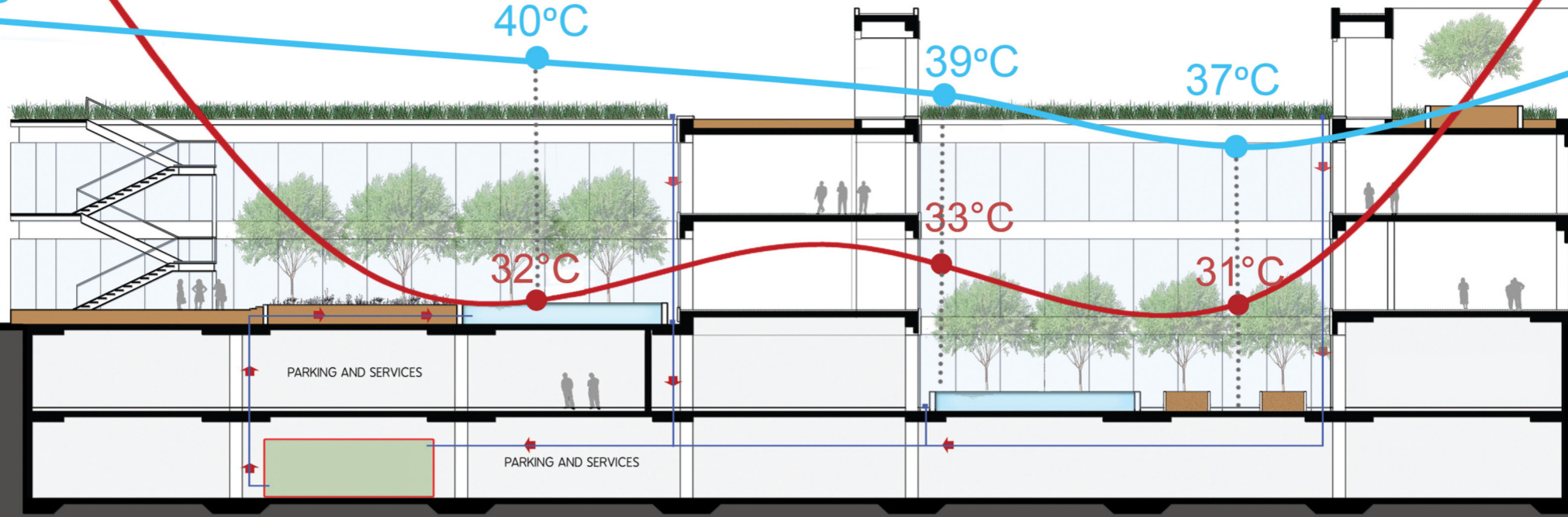
40°C

39°C

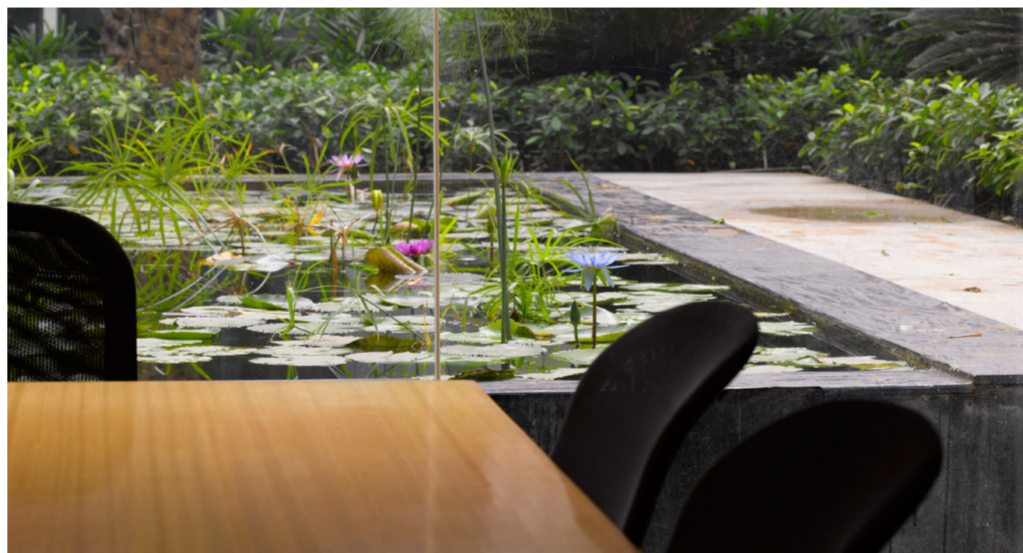
37°C

41°C

Thin slits in the external walls permit daylight in but reduce thermal ingress



Solar exclusion is achieved by means of a **solid external perimeter** with very small **slit windows** on the outside, which only permits **diffused daylight** into the office environs. The reliance on artificial lighting is substantially reduced as **courtyards** are created to increase **natural light levels** on the floor plates.



The underlying principle behind the design was that, 'the workplace should manifest itself as a more **flexible and integral part** of an employee's life rather than a separate entity on specified hours of confinement.'

Rhythmic articulation of volumes and spaces generates a scheme that is a radical departure from the structured differentiated spaces of the traditional office and the monotony of the open plan halls that have dominated office planning. The IGL campus makes a **cultural statement** through the importance and relevance of **energy conscious design** within the contemporary Indian work culture paradigm.

